

INFRASTRUCTURE

Jharkhand Rai University has its own campus spread in an area of approximately 20 acres at Raja Ulatu, Namkum, Ranchi. In this campus, the academic block, which includes classrooms, labs, seminar halls, workshops, library and computer lab for the students, is spread over one lakh sq. ft. area.

The University provides safe and secure hostel facility to students. The hostel block is built over 50,000 sq. ft area. There are separate hostel facilities for boys and girls. Daily bus services are provided to and from campus making it easier for students to commute.



Hon'ble MLA Shri. Ram Kumar Pahan inaugurating the new labs & workshops at the Namkum Campus.



Engg. students working on the machines placed at Namkum Campus.



Tree Plantation in and around Namkum Campus by Students of Deptt. of Agriculture

Academic Block of Jharkhand Rai University at Raja Ulatu, Namkum, Ranchi. The construction of campus is in full swing. Ground and first floor of academic block is functional with computer lab, Library, labs classroom for the student.



CLASSROOMS & SEMINAR HALL

Well-lit and ventilated classrooms at the University provide students an encouraging and conducive environment for learning and focussing. All the classrooms are well designed with comfortable seating arrangements. In order to make our students competitive we regularly organize national and international conferences, seminars and workshops in the campus. We have a well equipped seminar hall that has been specifically designed for hosting such events.



CLASSROOM



SEMINAR HALL



SEMINAR HALL

LIBRARY & READING ROOM

The University's state-of-the-art library is digital & accessible 24x7 via internet. It is equipped with Internet browsing facilities and a reading room as well. Library serves as the backbone to all the academic activities at our campus. The library at Jharkhand Rai University houses more than 25,000 textbooks and a good number of reference materials, journals, magazines, periodicals, e-books and audio-videos materials.



DRAWING LAB

The spacious Drawing Lab is facilitated with drawing boards & drawing instruments.



COMPUTER LABORATORY

The Computer Lab at the University has more than 120 desktops. All the desktops have seamless internet access. We provide a network of latest computers, adequately matched and supported by a host of printers, scanners, modems and other peripheral devices. Staff Members & students using laptops and smart phones can also benefit from Wi-Fi facility available in the campus.



INTERNET CONNECTIVITY / WI-FI & REPROGRAPHICS FACILITY

The University has a 150 Mbps dedicated fiber optics connectivity. Both the campuses are Wi-Fi enabled and the connectivity is available to all the students and staff members using laptops / smart phones. Reprographics Facility is also available.



Reprographics Facility



Wifi Tower

HOSTELS

We at JRU believe in providing our students with a friendly ambience which fosters their overall development, both in terms of learning and development. our aim is to help students not only to live comfortably, but also to balance their time between studies and extra-curricular activities in a better way.

The University provides hostel facility for both boys and girls. Presently it is capable of serving about 96 boys & 96 girls inside the campus in apartments, ensuring best social life and security for students. The hostel rooms are equipped with 24 hours of power back up and security.



BOYS HOSTEL ROOM



GIRLS HOSTEL ROOM

HOSTEL BUILDING



Girls Hostel



Boys Hostel

STUDENTS' MESS & CAFETERIA

Students' Cafeteria is a place where we provide our students with nutritious, healthy and unlimited food. The dining space has a seating capacity for more than 150 students at a time and provides students a comfortable and hygienic environment. Every student, especially the underprivileged one's can enjoy the canteen facilities at highly subsidized rates.

The cafeteria is spread across 3500 sq. feet area in the ground floor of Academic block for catering to students and the staff members. It is a hang out zone for the students where they relax & unwind and enjoy delicious meals. Our menu offers an extensive selection of everyday favourites and food items like sandwiches, Indian snacks, fruit juices, cold drinks, milk, eggs and beverages including tea and coffee. The cafeteria is operational from 8 AM to 8 PM.



Cafeteria



Cafeteria

OUTDOOR SPORTS FACILITIES



Volleyball



Cricket



Badminton



Football Ground

COMMON ROOM

At Jharkhand Rai University we have a common room for both boys & girls, which is quite spacious, well-ventilated and airy. Students are provided with different kinds of recreational activities.

There is a display board where students can express their thoughts through various forms like drawing, painting, poems, stories, etc. The girls' common room is equipped with sanitary dispenser machine & incinerator.

Common room is the place in the University campus that provides a relaxing atmosphere for socialising, enhancement of knowledge pool and recreation



AGRICULTURE (SOIL SCIENCE, GENETICS & HORTICULTURE LABORATORY)

The Department of Agriculture has Soil Science, Genetics & Horticulture Lab. Following equipments are available for these labs.



Sl. No.	Item Description
1	Digital pH meter with electrodes Systronics type
2	Digital Photoelectric colorimeter
3	Spectrophotometer Digital
4	Colorimeter
5	Mechanical shaker
6	Electrical/Chemical Balance
7	Sieve-2mm-0.2mm
8	Filter paper, pH paper, glassware, cleaning kit, stands, wooden racks
9	Filter paper whatmn no. 1, filter paper indicia, pH paper Merk, pH paper indicia, glassure, cleaning reagent
10	Insect collection net box
11	Preservation liquids. 500 ml
12	Preserved insect bottle
13	Culture media-bacteria and fungi
14	Microscope compound
15	Fungal, bacterial and algal slides
16	Sunshine recorder
17	Ordinary rain gauge
18	US open pan evaporimeter
19	Hot air oven
20	Incubator
21	BOD incubator
22	COD
23	Laminar flow
24	Single distillation unit
25	Gloves
26	Centrifuge machine
27	Centrifuge tubes
28	Pipettes micro
29	Blotting papers
30	Autoclave digital
31	Seed germination box
32	Hand refractometer
33	Petridishes and filter paper
34	Barometer
35	Digital thermo anemometer

36	Cup anemometer
37	Glasswares
	Pipette 1ml, 2ml, 5ml, 10ml
	Burette 50ml
	conical 100ml, 250ml, 500ml
	Beaker 100ml (5pc) , 250ml (5pc), 500ml (3pc), 1000ml (2pc)
	Measuring Cylinder 100ml (3pc), 250ml (1pc), 500ml (1pc)
	Volumetric flasks 100ml (2pc), 250ml (2pc)
38	Cotton plugs (non-absorbant)
39	soil hydrometer
40	Mortar and Pestle
41	Muffal furnace
42	Digestive system (Model)
43	Refrigerator
44	Fungal, bacterial and algal slides
45	Insect charts Matt finish
46	Blotting papers
47	Histological slides
48	Pick axe
49	Hand leveller
50	Garden rack
51	Shovel
52	Garden sword
53	Hand cultivator
54	Sickle
55	Hedge shear
56	Pruning saw
57	Grass shear
58	Khurpi
59	Furrow opener
60	Trowel
61	Rubber tapping tool
62	Prunning secateur
63	Budding, grafting, pruning knife
64	spade
65	Water can
66	Compound microscop ISI marked Almicro
67	Slides Blue star
68	Spirit Lamp
69	Petridish Tarsons
70	Petridish 75 mm Borosil
71	Petridish 100 mm Borosil
72	Beaker 100 ml Borosil

73	Beaker 250 ml Borosil
74	Beaker 500 ml Borosil
75	Conical flask 100 ml Borosil
76	Conical flask 250 ml Borosil
77	Conical flask 500 ml Borosil
78	Filter paper Indica
79	Litmus paper Red
80	Litmus paper Blue
81	Innoculating loops
82	pH paper
83	Ethanol
84	Methanol
85	Distilled water
86	Safranine
87	Acetone
88	Sodium hydroxide
89	Sodium Chloride
90	Sucrose
91	Slides
92	Conical flask 1000 ml
93	Dextrose
94	Lugol's Iodine
95	Plastic Pots
96	Neembolin
97	Knapsack Sprayer
98	Hedge Shear
99	Hand Hoe
100	Khurpi
101	Pruning Saw
102	Spade
103	Secateur
104	Wired Hand Rake



ENGINEERING GEOLOGY LAB

The Department of Mining Engineering. Following equipments are available for these labs.



Sl. No.	List Of Instrument/Models
1	Brunton Compass Indian make body in a case.
2	Clinometer brass body.
3	Daigonal Scale
4	Protetector (360 & 180)
5	Compass divider set in a box full set
6	Streak Plate 2½ x 2½ size
7	Pocket lens 10x magnification double fold bakelite mount
8	Rhynchonella
9	Trigonia
10	Conus
11	Murex
12	Physa
13	Cidaris
14	Stigmatophygus
15	Geological Microscope Petrological Polarising Microscope with Optics.(Censico make)
16	Mineral Hardness box with 9 Minerals one streak Plate, one small magnet, small knife in a box
17	Specimen of Gabbro 6x8 cm approx
18	Specimen of Basalt 6x8 cm approx
19	Specimen of Schist 6x8 cm approx
20	Specimen of Gneiss 6x8 cm approx
21	Specimens rock sample in a box size 5x7 cm set of 30 nos. in a box
22	Thin Sections on Minerals for Microscopic studies set of 20 in a box
23	Thin Sections of Rocks for Microscopic studies set of 20 in a box.
24	Specimen Mineral Sample in a box set of 20 nos. 5x7 cm in a box.
25	Cylindrical rock sample for material testing

PHARMACY LAB

The Department of Pharmaceutical Sciences. Following equipments are available for these labs.

CENTRAL INSTRUMENT LABORATORY

Sl No	Name of Instruments	Quantity
1	HPLC (Labtronics)	1
2	Syringe, C18 packed column	1,1
3	Digital Ultrasonic Cleaner	1
4	UV-VIS spectrophotometer (Shimadzu 1710)	1



MACHINE ROOM LABORATORY

Sl. No.	Name of Instruments	Quantity
1	Tube sealing machine	2
2	Collapsible tube sealing machine	1
3	Capsule filling & sealing machine	1
4	Ointment & tube filling machine	1
5	Disintegrater	1
6	Double cone mixer	1
7	Tablet coating machine	1
8	Ion exchanger	1
9	Bottle filling machine	1
10	Ampoule washing machine	1
11	Ampoule filling & sealing machine	1
12	Mechanical sieve shaker	1
13	Bottle crimping machine	1
14	Tablet punching machine	1



PHARMACEUTICAL ANALYSIS LABORATORY

Sl. No.	Name of the Instrument	Quantity
1	Heating Mantle	1
2	Hot Air Oven	2
3	Weighing Balance	1
4	Water Bath	1
5	Muffle Furnace	1
6	distillation unit	1
7	polarimeter	1
8	Digital pH meter	4
9	Hot Plate	1
10	Digital conductivity meter	1
11	Digital photo colorimeter	1
12	Digital potentiometer	1
13	Vaccum pump	2
14	Digital photo fluorometer	1
15	Digital flame photometer	1
16	Compressor .	1
17	Bio chemistry analyzer	1

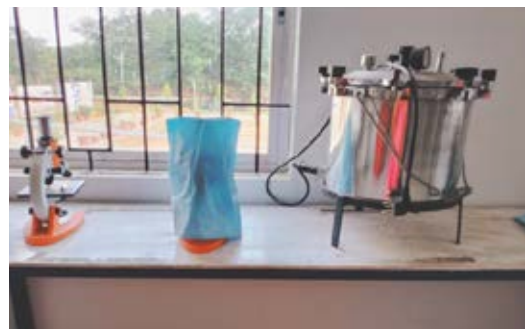
**PHARMACEUTICAL CHEMISTRY LABORATORY**

Sl No.	Name of the Instrument	Quantity
1	Refrigerator	1
2	Muffle furnace	1
3	Vaccum pump	1
4	Water bath	2
5	Magnetic stirrer hot plate	4
6	Hot plate	5
7	Heating mantle	2
8	Mechanical stirrer	3
9	Distillation unit	1
10	Hot air oven	3
11	Melting point apparatus	1
12	weight machine	4
13	Digital nephlo meter	1
14	PH meter	1
15	Vaccum filter	1
16	Analytical balance	5
17	weight machine	1
18	High precision balance	1



PHARMACEUTICAL MICROBIOLOGY / PHARMACY PRACTICE LABORATORY

S.No.	Instrument	Quantity
1	CENTRIFUGE	1
2	DIGITAL COLONY COUNTER	1
3	BACTERIOLOGICAL INCUBATOR	1
4	HOT AIR OVEN	1
5	DIGITAL pH METER	1
6	COMPOUND MICROSCOPE	2
7	AUTOClave	1
8	LABORATORY GLASS THERMOMETER	7
9	STETHOSCOPE	5
10	SINTERED GLASS FILTER CUP	4
11	CORK BORER	1
12	EYE PIECE 10X (WIDE ANGLE)	2
13	EYE PIECE 15X	3
14	TRIPOD STAND / WIRE	2
15	MEMBRANE FILTER	2
16	BUNSEN BURNER	4
17	FORCEP STEEL	1
18	SPATULA PLASTIC / STEEL	4
19	INOCULATING LOOP / WIRE	11
20	CLINICAL THERMOMETER	1
21	QUALITATIVE FILTER PAPER	2 BOXES
22	LAMINAR FLOW CABINET	1



PHARMACEUTICS LABOTARY - I

Sl. No.	Name of the Instrument	Quantity
1	HUMIDITY CHAMBER	1
2	MOISTURE BALANCE	1
3	DIGITAL BALANCE	3
4	COMPOUND MICROSCOPE	6
5	HOT PLATE	4
6	HEATING MANTLE	2
7	HOT AIR OVEN	4
8	UV CHAMBER	1
9	BOD CHAMBER	1
10	FRIBILATOR	1
11	DIGITAL ULTRASONIC CHAMBER	1
12	AUTOCLAVE	1
13	ASEPTIC CHAMBER	1
14	CENTRIFUGE	1
15	DSSICATOR	2
16	WATER BATH	3
17	HOT P;LATE WITH MAGNETIC STIRRER	1
18	PH METER	4
19	BULK DENSITY APPARATUS	1
20	VACCUM PUMP	3
21	TINCTURE PRESS	1
22	STEAM DISTILLATION	2
23	HARDNESS TESTER	5
24	BLENDER	1
25	MICROPIPETTE MULTICHANNEL	2
26	NORMAL MICROMETER	2



PHARMACEUTICS LABOTARY - II

SI No	Name of Instruments	Quantity
1	Tray Dryer	1
2	Magnetic Stirrer	2
3	Autoclave	2
4	Hot plate	1
5	Ball mill	1
6	Bacteriological Incubator	1
7	Ultrasonic cleaner	1
8	Roche's Friabilitor	1
9	Dissolution rate test apparatus	1
10	Tablet Disintegration test apparatus	Single-1, Double-1
11	Tablet Dissolution test apparatus	1
12	Antibiotic zone reader (analog)	1
13	Digital colony counter	1
14	Simple Microscope	17
15	pH Meter	1
16	Water bath	1
17	Digital balance	2
18	Bulk density apparatus	1



PHARMACOGNOSY LABOTARY

Sl. No.	Name of Instruments	Quantity
1	Compound Microscope	24
2	Heating Mantle	4
3	Hot Air Oven	2
4	Weighing Balance	3
5	Water Bath	2
6	Muffle Furnace	1
7	Projection Microscope	2
8	UV Chamber	1
9	Digital ph meter	1
10	Hot Plate	5
11	Centrifuge	1
12	Rotary Flask Shaker	1
13	Electrophoresis	1
14	Digital Ultrasonic Cleaner	1
15	Distillation Plant	1
16	Electronic Mixer	1
17	Hand Grinder	1
18	Simple Microscope	31
19	Binocular Microscope	1
20	Autoclave	2
21	Camera lucida	20



HUMAN ANATOMY AND PHYSIOLOGY LABOTARY

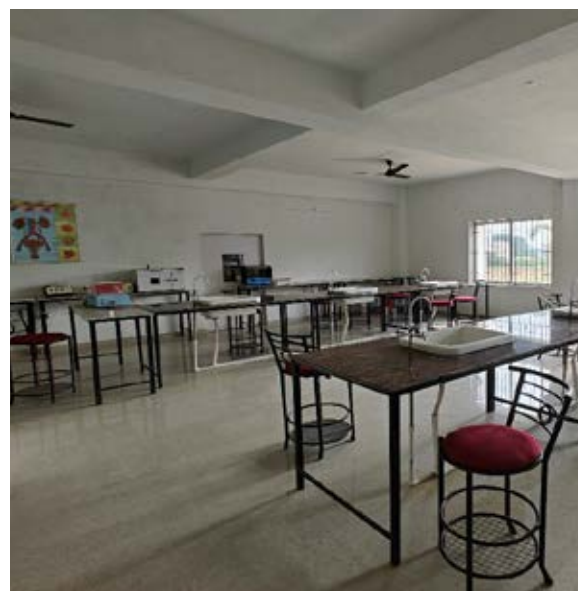
SL No	Name of Instrument
1	ROTATING DRUM
2	STUDENT ORGAN BATH
3	ANALGESIOMETER
4	MICROSCOPE
5	SELF BP KIT
6	SPHYGMOMANOMETER
7	HEMOCYTOMETER
8	AIR PUMP
9	STETHOSCOPE
10	THERMOMETER

SL NO	NAME
1	MALE REPRODUCTIVE SYSTEM
2	HUMAN MUSCLE
3	EAR ,NOSE ,THORAT
4	HUMAN EAR
5	HEART



PHARMACOLOGYLABOTARY

SL No	Name of Instruments	Quantity
1	PH Meter Digital	1
2	Digital Rota Rod	1
3	Refrigerated Centrifuge	1
4	Centrifuge	1
5	Spirometer	1
6	Pole Climbing	1
7	Histamine Chamber	1
8	Kymograph	2
9	Organ Bath (Single Unit)	2
10	Acto Photometer	1
11	Tele Thermometer	1
12	Student Stimulator	1
13	Convulsometer	1
14	Analgesiometer	1
15	Microscope	10
16	Weighing Balance	1
17	Sthethoscope	8
18	sphygmomanometer(mercury)	2
19	sphygmomanometer	7
20	Haemometer	10
21	Haemocytometer	10
22	Computer System with Expharm software	1



PHYSIOTHERAPY LAB

The Department of Physiotherapy (BPT). Following equipments are available for these labs.

PHYSIOLOGY & BIOCHEMISTRY LAB

Sl.No	Name of Instruments	Quantity
1	Sphygmomanometer	1
2	Stethoscope	1
3	Pulse Oxymeter	1
4	Reflex Hammer	1



EXERCISE & BIOMECHANICS LAB

Sl.No	Name of Instruments	Quantity
1	Finger ladder	1
2	Shoulder Wheel	1
3	Balance / Wobble Board	1
4	Dumbbell 5Kg	2
5	Dumbbell 20Kg	1
6	Weight Cuff 1Kg	1
7	Weight Cuff 2Kg	1
8	Swiss / Gymnastic Ball (Different Size)	3
9	Goniometer 360	1
10	Roller	1
11	Wrist Exerciser	1
12	Hand Grip Strengthener	1
13	Kinesiology Tape	1
14	Latex Exercise Band (Pink 2 + Blue 1)	1
15	Ankle Foot Exerciser (Broken)	1



ELECTROTHERAPY LAB

SI No.	Name of Modality / Apparatus	Quantity
1	Computerised IFT	1
2	TENS 4 Channel Auto mode	1
3	Digital Ultrasonic Unit	1
4	Traction Unit with Bed	1
5	Solid State Shortwave Diatheramy (SWD)	1
6	Paraffin Wax Bath Unit	1
7	Continues Passive Movement (CPM)	1
8	Mini Muscle Stimulator	1



ANATOMY LAB

SI No.	Name of Artificial Bone	Quantity
1	Femur	2
2	Tibia	2
3	Fibula	2
4	Hip	2
5	Sacrum (fuse)	1
6	Scapula	1
7	Humerus	1
8	Radius - Ulna	1
9	Ribs	24

