

6.2.2 The functioning of the institutional bodies is effective and efficient as visible from policies, administrative setup, appointment and service rules, procedures, etc.

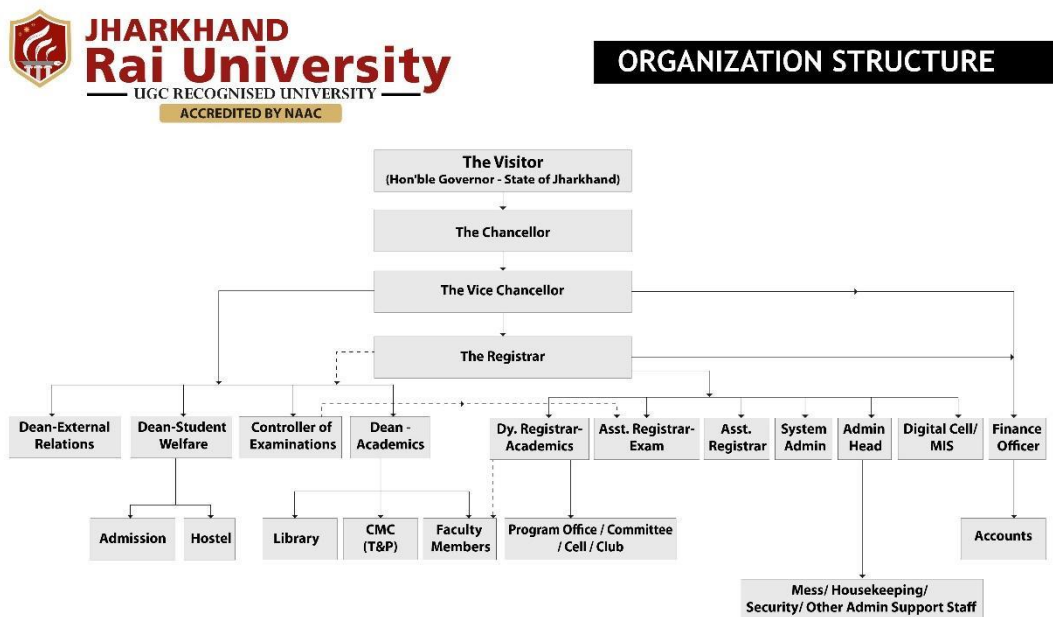
Write description in maximum of 200 words

- **Upload relevant supporting document**

Jharkhand Rai University has a well-structured administrative and academic setup to consistently improve the quality and standard of education towards achieving excellence. The functioning of the different institutional bodies is effective & efficient which reflects through the Policy implementation, Rules, Regulations, Academic and Administrative setup. Effective and efficient functioning of the University is governed through different statutory and other bodies as specified in the University Act & Statutes.

The leadership of the University is sensitive to the emerging needs and recognizes the imperatives of the system to grow, diversify reform, innovate and evolve with changing contexts. The University is prompt in adopting the guidelines issued by the different regulatory bodies like UGC/ PCI/BCI etc, and continuously strives towards the quality enhancement

The **Organogram** of the University reflecting the functioning of the different Institutional bodies is shown below:



The **Academic Departments** are monitored by:

- **Board of Studies(BOS)**
- **Departmental Committee**
- **Head/Coordinator of the Academic Departments**
- **Teaching Faculties**

As per the Act & Statutes of Jharkhand Rai University the following statutory bodies are functional in the University. Those are as follows:

- **Board of Governors (BOG)**
- **Board of Management (BOM)**
- **Academic Council**
- **Research Council**
- **Finance Committee**

All the above mentioned bodies function as per the power conferred in the Act & Statutes of Jharkhand Rai University.

Apart from that, the other major Institutional Bodies of the University functioning in the University are as follows:

- **Board of Studies (BOS)**
- **Admission Committee**
- **Examination Board**
- **Internal Quality Assurance Cell (IQAC)**
- **Institution's Innovation Council (IIC)**
- **National Service Scheme (NSS) Cell**

All these above mentioned bodies are constituted by order of the Hon'ble Vice Chancellor & the regular meetings are conducted to ensure the major functionalities of the University.

Jharkhand Rai University follows the Recruitment Process as per the norms of the University. A Selection Committee comprising of the Subject Expert, HoD, External Subject Expert decides the worthiness & suitability of the candidate by his/her performance in the Interview according to the parameters defined by the University management time to time. The Employment Terms, Employees Code of Conduct and other service rules like Leave Policy, Appraisal Policy, Research Policy etc are part of the **Employees Handbook** which is also uploaded on the University Website.

Link:

<https://www.jru.edu.in/wpcontent/uploads/downloads/HR%20Manual%202021%20updated.pdf>

The Library Rules, IT Rules, Hostel Rules, Students Code of Conduct and the composition of all other **Club/ Committee/ Cell** i.e., Anti Ragging Committee, Anti Sexual Harassment Cell, Disciplinary Committee, Grievance Redressal Cell, Women Cell which are actively functioning in the University are there in the **Student Handbook**. The same is also uploaded on the University Website for easy access to all the stakeholders. The meeting of all the Club/Committee/Cell holds regularly to ensure the smooth functioning in the University.

Link: https://jru.edu.in/studentcorner/student-handbook/Handbook_2022.pdf

University follows a democratic and participatory approach of governance for achieving its goals. The power delegation & decentralisation of the authority enriches the effective and efficient functioning of the University in all its spheres of planning, decision making and implementation. The Management plays a vital role in enriching the bottom-up approach in planning and execution of various academic activities.